



EMBEDDED INTEGRATION

Transforming SaaS and Enterprise Connectivity

www.bizdata360.com

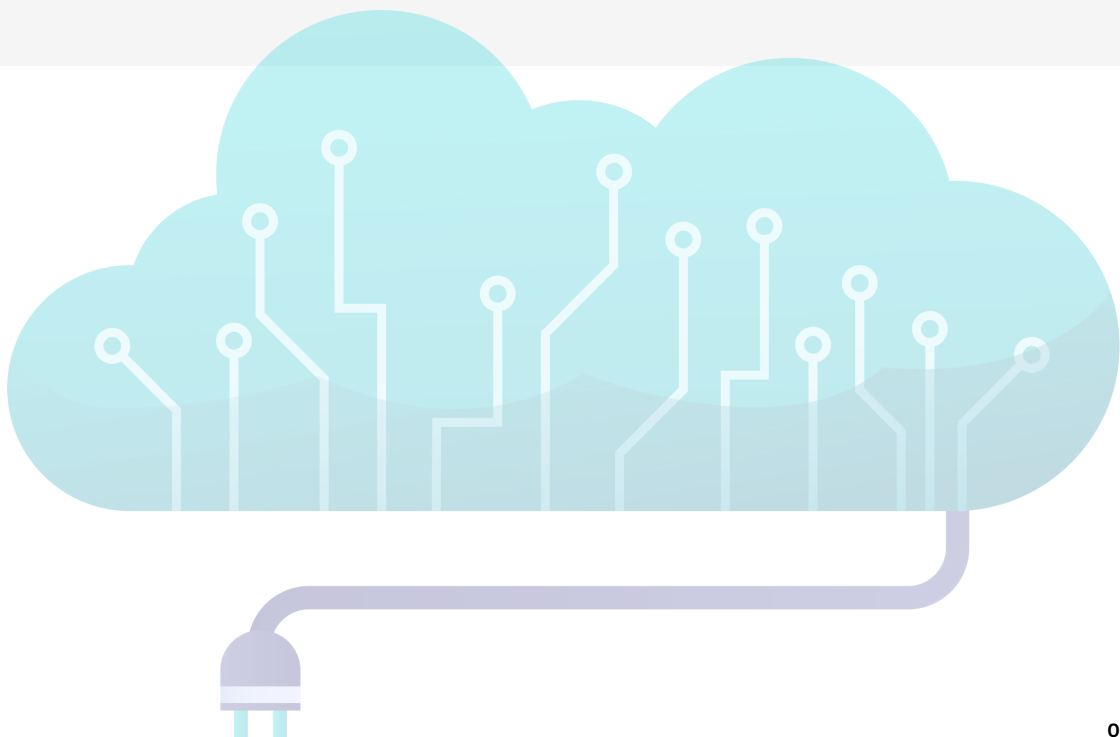


INTRODUCTION

In a rapidly evolving digital landscape, businesses are relying on increasingly complex ecosystems of applications and tools. From ERPs and CRMs to e-commerce platforms and time-tracking tools, the need for seamless data flow between systems has never been more critical. This whitepaper explores the growing trend of Embedded Integration, its transformative potential, and how platforms like eZintegrations are leading the charge in simplifying connectivity.

Latest Industry Trends

- **The Rise of Embedded Solutions:** Companies are moving beyond standalone tools, embedding functionality like analytics, integrations, and automation directly into their applications. Embedded Integration has emerged as a key driver of product stickiness and customer retention.
- **Shift Toward Self-Service Integration:** End-users increasingly demand self-service options to configure and manage integrations without heavy reliance on IT teams.
- **AI-Driven Integration:** Integration platforms are incorporating AI and ML capabilities to enrich data flows, improve decision-making, and automate workflows.
- **Real-Time Data Movement:** Businesses can no longer afford delays. Real-time data synchronization is becoming a standard expectation across industries.
- **Multi-Tenancy for SaaS:** As SaaS platforms scale, multi-tenant architectures enable them to cater to multiple customers with isolated environments, ensuring security and efficiency.



Business Challenges

- **Fragmented Systems:** Organizations often face disconnected tools and siloed data, leading to inefficiencies and missed opportunities.
- **High Customer Churn:** SaaS providers struggle to retain customers when their platforms cannot integrate seamlessly with the customer's existing tech stack.
- **Rising Costs:** Managing integrations manually or through standalone tools increases operational expenses.
- **Time-to-Value:** Customers demand faster onboarding and quicker ROI from software investments.
- **Scalability Issues:** As businesses grow, traditional integration methods struggle to handle large data volumes and complex workflows.

Technical Challenges

- **API Complexity:** Every system has its own API specifications, requiring significant customization for integrations.
- **Real-Time Synchronization:** Ensuring real-time updates without impacting performance can be technically demanding.
- **Data Transformation:** Handling data inconsistencies and converting it into a unified format is critical yet challenging.
- **Security Concerns:** Integrations must meet stringent security and compliance requirements, such as SOC2 and HIPAA.
- **Multi-Tenancy Design:** Creating scalable integrations for SaaS platforms with multiple customers requires robust architecture.

The Importance of Embedded Integration

Embedded Integration allows SaaS providers and enterprises to:

- **Deliver Native Connectivity:** Offer built-in integration capabilities, eliminating the need for third-party tools.
- **Enhance User Experience:** Users can connect their systems without leaving the platform, ensuring a seamless experience.
- **Accelerate Adoption:** Customers onboard faster when integration setup is simplified.
- **Reduce IT Dependence:** Empower non-technical users to configure and manage integrations through intuitive interfaces.
- **Scale Seamlessly:** Handle high data volumes and diverse use cases as businesses grow.

Value Proposition of Embedded Integration

For SaaS Platforms

- **Increased Product Stickiness:** By embedding integration, SaaS providers make their platform indispensable to users.
- **Faster Time-to-Market:** Pre-built integration frameworks reduce development time.
- **New Revenue Streams:** Integration-as-a-service can be monetized as a premium offering.

For Enterprises

- **Streamlined Workflows:** Automate processes across tools to boost productivity.
- **Cost Savings:** Reduce reliance on expensive middleware and manual efforts.
- **Improved Data Quality:** Synchronize accurate, up-to-date information across systems.

Why Choose eZIntegrations?

eZIntegrations is a leading platform in Embedded Integration, offering unparalleled capabilities:

- **Unlimited Data Streams:** Handle massive data volumes with no bottlenecks.
- **Real-Time Data Sync:** Keep your systems updated in real-time, enabling faster decision-making.
- **No-Code/Low-Code Setup:** Empower users with easy-to-configure workflows without technical expertise.
- **AI & ML Workflows:** Integrate advanced AI capabilities for enriched data insights.
- **Multi-Tenancy Support:** Perfect for SaaS platforms catering to multiple customers with unique needs.
- **Vector Database Compatibility:** Enable next-gen data applications with built-in support for vector databases.
- **White-Label Capabilities:** Seamlessly integrate into your product and brand it as your own.

Use Cases

- **E-Commerce Platforms:** Sync inventory, orders, and customer data with ERP and warehouse systems for real-time updates.
- **Time and Attendance Systems:** Connect biometric devices with payroll and HR systems to automate time tracking and compliance.
- **Finance and Accounting:** Streamline accounts payable and receivable workflows with secure integrations to financial software.

Outcome: From Problem to Solution

With eZintegrations, businesses can:

- Eliminate data silos by synchronizing systems in real-time.
- Reduce operational costs with automated workflows.
- Accelerate decision-making through AI-enhanced insights.
- Scale seamlessly with multi-tenant and high-volume capabilities.

Key Features at a Glance

- **Real-Time Data Sync:** Ensures accuracy and up-to-date information.
- **White-Label Integration:** Customize and brand as part of your product.
- **AI/ML-Powered Workflows:** Drive smarter processes with embedded intelligence.

Conclusion

As businesses face increasing complexity, Embedded Integration is no longer a luxury but a necessity. Platforms like eZintegrations lead the way in simplifying connectivity, empowering SaaS providers and enterprises to deliver exceptional value to their customers. Whether you're building a SaaS application or looking to streamline your enterprise workflows, Embedded Integration with eZintegrations is your gateway to scalability, efficiency, and innovation.

Contact us today for a demo or free trial and transform the way you integrate!



eZintegrations™

Bizdata Inc.
www.bizdata360.com

[TRY FOR FREE WITH YOUR ENTERPRISE DATA](#)

For more information about Bizdata, visit

www.bizdata360.com

or

contact us at +1-650-283-1644

to speak to a Bizdata representative.

Copyright © 2025, Bizdata and/or its affiliates. All rights reserved. The document is provided for information purposes only and the contents hereof are subject to change without notice. This document is not warranted to be error-free, not subject to any other warranties or conditions, whether expressed orally or implied in law, including implied warranties and conditions of merchantability or fitness of a particular purpose. We specifically disclaim any liability with respect to this document, and no contractual obligations are formed either directly or indirectly by this document. This document may not be reproduced or transmitted in any form or by any means, electronic or mechanical, for any purpose, without our prior written permission. eZintegrations and Goldfinch Analytics are registered trademarks of Bizdata and/or its affiliates. Other names may be trademarks of their respective owners.